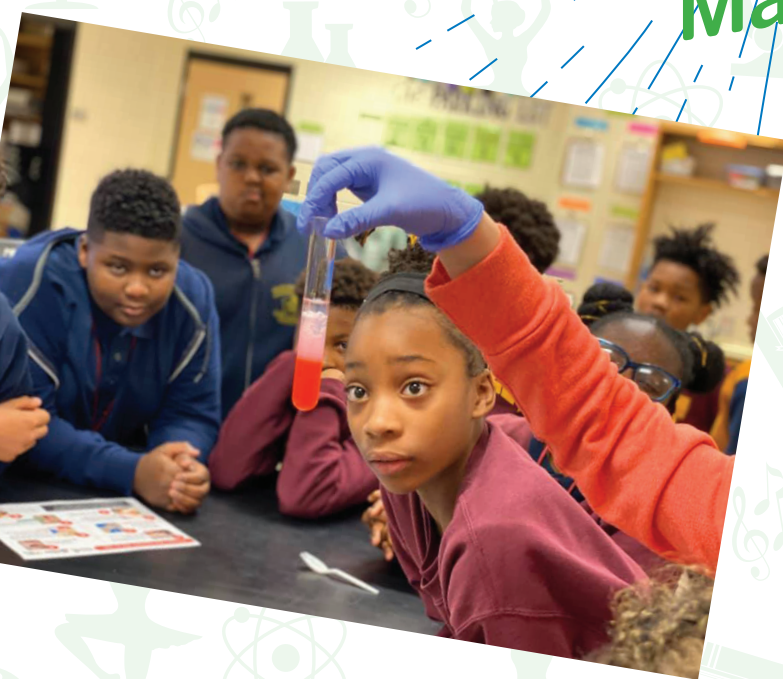




2021-2022

SECONDARY

Magnet Programs



APPLICATION PERIOD
October 5 - December 2

Second Application Period begins February 1, 2021 for schools and programs with space available

www.ebrmagnet.org

Leslie Brown,
Superintendent of East Baton Rouge Parish Schools



As The East Baton Rouge Parish School System has some of the most highly recognized magnet programs across the United States. Our nationally recognized Magnet Programs – led by dedicated teachers and school administrators – celebrate individuality and bring a wide range of innovative choices and engaging experiences to our families. Inspired by diversity and creativity in the classroom, these programs provide high-quality and inventive instruction to meet the unique interests of every child. We are dedicated to providing our students with meaningful and intentional academic learning experiences and interactions that will improve student achievement and support strong character development.

On a daily basis, we promote proven themes, special curricular focuses and the opportunity to ignite passion in nurturing classroom environments. The continuous expansion of our award-winning magnet programs has resulted in more than a 50% enrollment increase in magnet classrooms in the past six years to date. It is a pleasure to witness the growth, engagement and incredible academic achievements taking place in our magnet programs.

By allowing children and families the opportunity to interact in the learning process, parental involvement and engagement is one of the cornerstones of our success. The robust programs greet students with critical-thinking challenges and hands-on experiences that cultivate curiosity and creativity. The educational themes, like visual and performing arts, creative sciences and arts, world language immersion, and STEM (Science, Technology, Engineering, and Mathematics) offered in our magnet programs help to provide students with learning experiences they will carry with them throughout their professional and personal lives. Although academic themes can vary by school and program, all of our magnet programs elevate our students' 21st-century skills preparing them for academic success and future careers.

Our magnet students and staff consistently represent the East Baton Rouge Parish School System by showcasing our exceptional programs and competing on regional, state, national, and global platforms with proven success. Some of the 2020 awards and accomplishments include: 2020 MSA Regional V Principal of the Year – Candice Hartley (BRCVPA), 2020 MSA Region V Teacher of the Year – Kim Bumgardner (BR High School), Merit Award – Top 10 Schools (BRCVPA & BRFLAIM), National Magnet Demonstration School (Mayfair Laboratory), 2020 Merit Awards – Magnet Schools of Excellence (four schools) and Magnet Schools of Distinction (five schools), 258 AP Scholars (BR High), NAF Distinguished Academy for the Academy of Engineering Program (Scotlandville High), EBR Film Festival Winner (Southeast Middle), Magnet Schools of the Mid-South Promising Future Award (Villa del Rey Elem.), 2020 Chevron Innovator Educator Award Finalist – Tyler Colson (Park Forest Middle).

Theresa Porter,
Director of Magnet Programs



The 2020 pandemic has created a monumental global shift in every conceivable way, affecting technology and how educators teach and deliver instruction to students. More importantly, it has created an opportunity to move the design of specialized and theme-based magnet programs in an evolutionary pattern to engage students, while ensuring authentic instruction. In short, equity and equitable access to technology has become a critical resource for every student, teacher and parent.

The pandemic also provided the East Baton Rouge Parish School System with opportunities to challenge the way we think and deliver instruction in-person and virtually. Teams of educators devised systems, platforms, and ways to engage students, as well as collaborated with other school districts nationally, while preserving our programs' integrity. We revised curriculum offerings and developed educational experiences throughout the district to ensure students have equitable opportunities to develop learning, thinking, and life skills that lead to success at the next level. Recognizing that support for professional learning opportunities is an integral component to ensure specialized themes are implemented with fidelity, the district proactively engaged with consultants and support services to build and create foundations supporting STEM, Montessori, visual and performing arts, and foreign language immersion programs, among others.

Our goal was to connect and engage students in authentic learning environments, complete with opportunities to engage in project-based activities. For example, elementary students at Park Forest Elementary and Villa del Rey received consumable packets, including items to build projects at home. Parents of students enrolled in BR FLAIM received free, on-demand access to digital platforms supporting each language component. Administrators at every level worked tirelessly during the pandemic's initial stages to ensure that students received quality enrichment activities, including but not limited to complimentary, full access to resources aligned with the curriculum and themes.

The District has expanded the number of magnet seats available at the elementary, middle and high school level. We have enhanced programs at Glen Oaks High, which now offers Sports Medicine and Radio Broadcasting components in addition to the Health Science and Nursing programs. An agricultural elective at Southeast Middle Magnet is providing students enrolled in the digital media component an opportunity to use social media to "market" their produce.

In short, the district recognizes that this paradigm shift has left an indelible footprint on the way magnet programs deliver instruction creating a framework and an opportunity to ensure that the needs of each child's individual learning style, academic success, and readiness for a "new" global learning environment are met.

Our Goal

To become an exemplary pre-kindergarten through 12th grade (PK-12) school system, with rigorous teaching and learning, where ALL students and adults meet high expectations.

Our Vision

To become a high-achieving, performance-based system advancing scholarship and the lifelong development of students consistent with their needs, interests and abilities, while strengthening the economic, social and cultural life of a diverse community and operating at the highest level of ethical and professional behavior.

Our Objectives

- Increase student achievement
- Promote a safe, caring, and service-oriented district-wide culture
- Improve communications and expand community engagement

Our Diversity Goal

The district's diversity goal for Magnet Programs focus is on maintaining a broad representation reflective of the community while increasing marketing and recruiting strategies for those schools whose student population and application pools are not diverse. Diversity broadly to include, but not limited to the following factors: gender, socio-economic status, race, ethnicity, language ability and students with exceptional needs.



The **East Baton Rouge Parish School System** is committed to providing an online magnet application and selection process that is open to all students in the school system, while maintaining equity and diversity.

To ensure this process, the Office of Magnet Programs uses four (4) types of diversity factors to select applicants for available seats.

First, students who attend selected magnet schools receive priority admission to the next academic level, if they apply and qualify.

Second, admission preference is given to students who qualify and reside in the proximity, priority or the attendance zone of most magnet schools.

Third, siblings are given preference (if they apply to a school which has a brother or sister currently enrolled) in the same

school's program for the 2021-2020 school year and for the first application period only. Siblings are defined as brothers and/or sisters living in the same household and not matriculating to the next building level.

Finally, an applicant's socio-economic status may be used as a race-neutral factor if the other factors have been exhausted and seats are still available.

The district's diversity goal will be based on the following percentages for each school's program:

Lunch Status

55% Paid

45% Free/Reduced

For information on additional policies and procedures, please carefully read the information in this catalog or access www.ebrmagnet.org.

Middle Schools Grades 6-8

Belfair Montessori

4451 Fairfields Avenue, Baton Rouge, LA 70802
(225) 356-6191

Capitol Middle

5100 Greenwell Springs Road, Baton Rouge, LA 70806
(225) 231-9292

Istrouma Middle

3730 Winbourne Avenue, Baton Rouge, LA 70805
(225) 831-9997

Mayfair Lab

9880 Hyacinth Avenue, Baton Rouge, LA 70810
(225) 761-7849

McKinley Middle

1550 Eddie Robinson, Sr. Drive, Baton Rouge, LA 70802
(225) 388-0089

Park Forest Middle

3760 Aletha Drive, Baton Rouge, LA 70814
(225) 275-6650

Scotlandville Middle

9147 Elm Grove Garden Drive, Baton Rouge, LA 70807
(225) 775-0776

Sherwood Middle

1020 Marlbrook Street, Baton Rouge, LA 70815
(225) 272-3090

Southeast Middle

15000 Harrell's Ferry Road, Baton Rouge, LA 70816
(225) 753-5930

Westdale Middle

5650 Claycut Road, Baton Rouge, LA 70806
(225) 924-1308

Woodlawn Middle

14939 Tiger Bend Road, Baton Rouge, LA 70817
(225) 751-0436

High Schools Grades 9-11

Baton Rouge High

2825 Government Street, Baton Rouge, LA 70806
(225) 383-0520

Belaire High

12121 Tams Drive, Baton Rouge, LA 70815
(225) 272-1860

Glen Oaks High

6650 Cedar Grove Drive, Baton Rouge, LA 70812
(225) 356-4306

Istrouma High

3730 Winbourne Avenue, Baton Rouge, LA 70805
(225) 636-2686

Liberty High

1105 Lee Drive, Baton Rouge, LA 70808
(225) 924-9406

Tara High

9002 Whitehall Avenue, Baton Rouge, LA 70806
(225) 927-6100

Scotlandville High

9870 Scotland Avenue, Baton Rouge, LA 70807
(225) 775-3715

Woodlawn High

15755 Jefferson Highway, Baton Rouge, LA 70817
(225) 753-1200



Application Process

The **Office of Magnet Programs** will conduct at least one official magnet application period annually. To begin the online application process visit www.ebrmagnet.org. Parents must complete the application process within **three (3) calendar days** after beginning the online application process and submit a signed signature page to the first choice school within **seven (7) days** of submission. All applicants must provide **two (2) valid proofs** of residency to complete the process (see page 6).

Applicants who select a school as a second-choice will be contacted by the Magnet Office only if a seat becomes available. When the applicant accepts the second-choice seat, the parent and student must sign a form relinquishing their rights to a seat at their first-choice school, even if a seat becomes available.

Request for changes to an application must be presented in writing **before** the application period ends and received in the Office of Magnet Programs on or before **December 2, 2020**. Changes to an application cannot be made after the selection process has been completed for any program.

If a student is not eligible to attend a magnet program based on documents submitted during the application period, schools will notify parents by mail. An applicant who is not academically eligible during the first application period may apply during a second application period, if he or she becomes eligible.

However, a second application may NOT be submitted by an applicant whose name is in the waiting pool for the current academic school year.

Students who are not selected are maintained in a waiting pool, which expires **ten (10) calendar days** after the first day of the school year.

In order to be considered for the next academic school year, applicants who are not selected for a seat **must reapply** during the new application period.

MAGNET PROGRAMS WITH TALENTED SERVICES

The Talented Arts Program is for exceptional students identified in grades K-12.

Although students must be identified as “talented” through school level screening and an EBR Pupil Appraisal Evaluation, they must still apply for a magnet seat during the application period.

A teacher or parent can request a screening through the district’s Pupil Appraisal Services. For more information on the Talented Arts Program, call 225-929-8642.

Magnet Progression Policy

The East Baton Rouge Parish School Board approved policy allows students enrolled in a dedicated magnet school to progress to the next magnet school level, if they apply and qualify. Therefore, the Office of Magnet Programs will consider applicants from the following elementary magnets in its progression policy: **BRCVPA, Belfair Montessori, Dufrocq Montessori, Dufrocq Academic, Baton Rouge Foreign Language Academic Immersion Magnet (BR FLAIM), Forest Heights Academy of Excellence, Mayfair Lab, and Westdale Heights.**

Students who attend these elementary magnets and are enrolled in 5th grade for a full academic year will receive priority admission into **Istrouma Middle, Mayfair Lab, McKinley Middle, Scotlandville Middle, Sherwood Middle, or Westdale Middle (Immersion Program)**, if they apply and meet academic eligibility requirements during the first application period.

Students who are enrolled in 5th grade for a full academic year in the creative sciences and arts magnet program at **Villa del Rey or Park Forest Elementary** will receive priority admission into the magnet program at **Park Forest Middle**.

At the middle school level, students from **McKinley Middle, Sherwood Middle, Scotlandville Middle, Mayfair Lab, and Westdale Middle Foreign Language Immersion Program** enrolled in 8th grade for a full academic school year will receive priority admission into **Baton Rouge High**, if they apply and meet academic eligibility requirements during the first application period only.

Students who are enrolled in the STEM-based magnet programs at **Capitol Middle or Southeast Middle** will receive priority admission into **Liberty High**, if they apply and meet the academic eligibility requirements.

Students who are enrolled in the STEM-based magnet program at **Woodlawn Middle** will receive priority admission into **Woodlawn High**, if they apply and meet the academic eligibility requirements.

Students who are enrolled in the STEM-based magnet program at **Istrouma Middle** will receive priority admission into **Istrouma High**, if they apply and meet the academic eligibility requirements.

Students who are enrolled in the creative sciences and arts magnet program at **Park Forest Middle** will receive priority admission into **Belaire High**, if they apply and meet the academic eligibility requirements.





The Application

To submit an online application, parents must create a parent account in the online application portal. Parents may complete one application per child with up to two (2) school choices, entered in order by priority. Students will be assigned a generic identification number, once the application is submitted. When completing the application process, parents must provide all required information for the application to be considered two (2) proofs of residency, grades and test scores (if applicable), signature page. The signature page must be hand delivered. Other required documents may be uploaded while completing the application or hand-delivered.

Proofs of Residency

ACCEPTED

- WATER /SEWAGE STATEMENT
- ELECTRICAL STATEMENT
- GAS STATEMENT
- MORTGAGE STATEMENT
- SIGNED LEASE
- RESIDENTIAL PHONE STATEMENT

NOT ACCEPTED

- BIRTH CERTIFICATES
- CELL PHONE BILLS
- CREDIT CARD STATEMENTS
- BANK STATEMENTS
- DRIVERS' LICENSES
- SOCIAL SECURITY CARDS

UPLOADING DOCUMENTATION

All parents will have the flexibility of uploading key documents such as proofs-of-residency, report cards and test scores while completing the online application. If uploaded, these documents do not need to be hand delivered to the school.

SIGNATURE PAGE

All applicants must complete and submit their application within **three (3) days** from initiating the online application process. Signature pages must be signed and hand delivered within **seven (7) days** of the date the application was submitted.

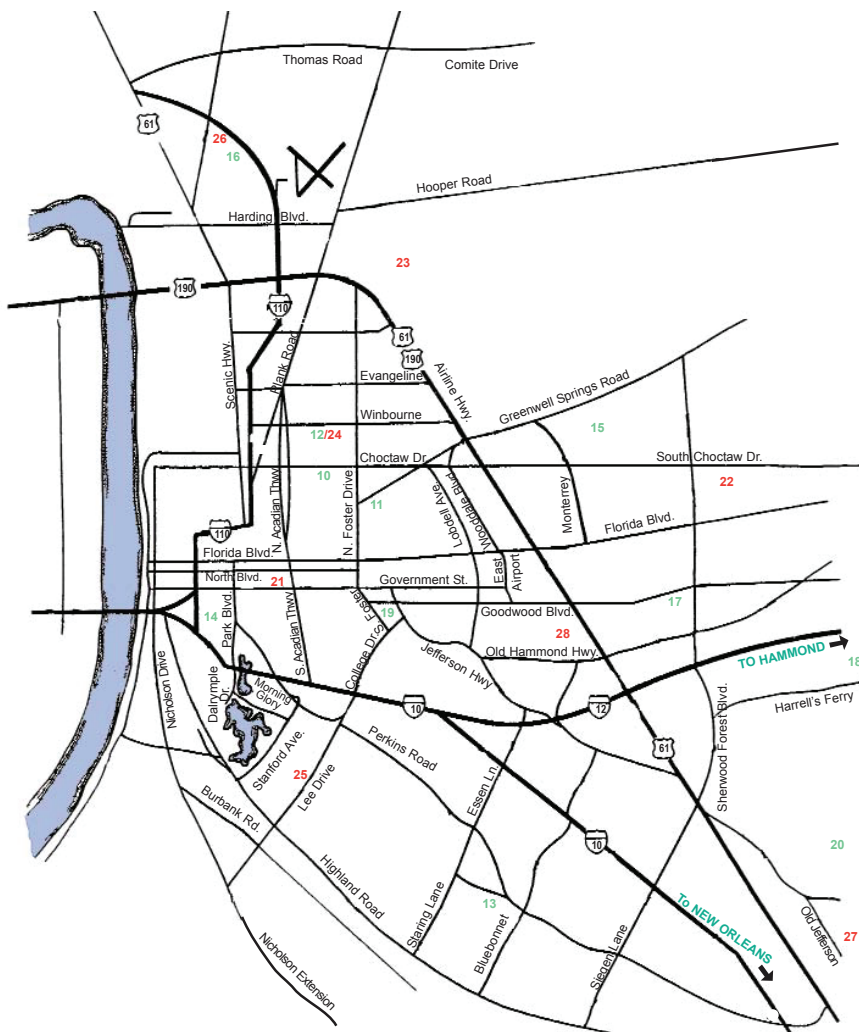
Middle & High School Magnet Program Locations

MIDDLE

- 10 Belfair Montessori
- 11 Capitol Middle
- 12 Istrouma Middle
- 13 Mayfair Lab
- 14 McKinley Middle
- 15 Park Forest Middle
- 16 Scotlandville Middle
- 17 Sherwood Middle
- 18 Southeast Middle
- 19 Westdale Middle
- 20 Woodlawn Middle

HIGH

- 21 Baton Rouge High
- 22 Belpaire High
- 23 Glen Oaks High
- 24 Istrouma High
- 25 Liberty High
- 26 Scotlandville High
- 27 Woodlawn High
- 28 Tara High



Selection Guidelines

The Office of Magnet Programs will provide an online application period with a subsequent selection process that assures fair and equitable access to all students. The student selection process for magnet schools strives to provide a balanced opportunity for all applicants to be selected.

1. Eligible students who are currently attending an elementary magnet program will be given priority when assigning students to these dedicated middle magnet programs: McKinley, Scotlandville and Sherwood.
2. Eligible students who are currently attending one of these dedicated middle magnets (Sherwood, Scotlandville, Mayfair, and McKinley) or enrolled in Westdale Middle's magnet program will be given priority for entrance into Baton Rouge Magnet High.
3. Eligible students who are currently enrolled in the magnet programs at **Capitol and Southeast Middle** will receive a priority for admission into Liberty High.
4. If a student leaves a magnet program, accepts a seat in another magnet program or declines placement at a magnet school at any time, they will be required to reapply and must go through the selection process again. No preference will be given because of previous attendance at a magnet school.
5. Transfers are **NOT** granted for any applicant interested in a magnet program, whether currently enrolled in a magnet program or a traditional school setting. **All interested applicants must apply during the application period(s) in order to be considered for available seats.**
6. Only **one** online application per student will be accepted and processed per academic school year. Any applicant circumventing this process will be disqualified from the selection process.
7. Students who live outside of the East Baton Rouge Parish School System are **NOT** eligible to apply or attend a magnet school. Applications submitted with a post office box address will not be considered for processing.



Explanation of Selection and Diversity Factors

Because ethnicity is not used as a determining factor to assign students to a magnet program, the district will use the following Lottery Diversity Factors (LDFs) or race neutral factors that will help promote a more diverse population for each school.

Magnet Progression - allows an eligible applicant enrolled in a dedicated magnet school to progress to the next magnet school level, if they apply and qualify during the **first application period only**.

Sibling Preference - defined as brothers and/or sisters domiciled in the same household, with a non-matriculating brother or sister enrolled the previous year.

Proximity Zone - a walk-out distance established by the school district which is up to two (2) miles from each academic magnet with the exception of **BRCVPA, BR FLAIM, and Baton Rouge High**.

Priority Zone - existing or prior school attendance zone for students applying for **Mayfair Lab** and **Liberty High**, only.

Attendance Zones - existing or prior school attendance zones for **Belaire High, Belfair Montessori, Dufrocq Academic and Montessori, Glen Oaks High, Istrouma Middle and High, Park Forest Elementary and Middle, Scotlandville Middle, Villa del Rey, Woodlawn Middle and Woodlawn High**, and the **Centers of Excellence** are used as priority for students residing within the school's attendance zone.

Socioeconomic Status - a student's status in the district's lunch program is based on information submitted by a parent or guardian. The use of this race neutral factor may be based on the following goal (percentages) for each magnet school:

- 55% Paid • 45% Free & Reduced



Frequently Asked Questions

1. What do I need to do if my child has been placed in a magnet program's waiting pool?

Students will remain in the district's waiting pool until it expires or until an invitation is extended to participate in the program.

2. How long are waiting pools effective?

Magnet schools waiting pools are effective until the 10th calendar day after the beginning of each school year.

3. If my child's name is in a waiting pool, what are the chances that I will be called?

It is almost impossible to predict fluctuations within the waiting pool, since we do not know when seats will become available.

4. Are there reasons a name could be removed from a waiting pool?

Typically, names are removed when parents opt not to accept enrollment in a particular program or accept another program's invitation. Other factors may include students no longer residing in the East Baton Rouge Parish School District or not promoted to the next grade level.

5. Can I change my first choice selection even though my application has already been submitted?

Request for changes to an application must be received in person at the Office of Magnet Programs on or before December 2, 2020. Changes to an application cannot be made after the selection process has been completed for any program.

6. Can I accept a second choice program's invitation and remain in another program's waiting pool?

No, once you have accepted a program's invitation and registered at the school, your child's name will be removed from the first-choice waiting pool.

7. If my child is accepted into a program, do I have to apply again the next year to remain in that program?

No. Once a student is assigned and enrolled in a program, there is no need to reapply as long as the student continues to meet academic requirements for the same building level.

8. My children, who are already in a magnet program, will progress to a middle and high school next year. Will I have to reapply?

Yes. Magnet students in the 5th and 8th grades must apply for middle and high school level magnet programs.

9. If I move into the East Baton Rouge Parish School System and my child was previously enrolled in a magnet school program in another district, will my child automatically receive priority admission into the East Baton Rouge Magnet Program?

No. You will need to complete an application to enroll your child. Criteria will vary from district to district, so please inquire about the application procedure and qualifications for a school's magnet program.

10. I live in a nearby school district. Will my child be able to enroll in a magnet school in the East Baton Rouge Parish School System?

No. School districts are independent entities governed by school board policies. Therefore, only students who reside in the East Baton Rouge Parish School System can enroll in our magnet schools.

11. Should I have documentation delivered to a school by a teacher or an administrator?

No. It is a parent or guardian's responsibility to hand-deliver required documentation to the first-choice school within the three-day time frame.



Frequently Asked Questions

12. I would like to transfer my child from one magnet program to another. What process should I use?

Transfers are not granted between programs. You must apply to each magnet program that you are interested in during an applicable application period. Criteria may vary, so please check with the school's magnet site coordinator. Information is also available on the school's website.

13. I live in the southeastern part of the parish and my child's school is more than ten (10) miles away. Will transportation be provided?

Yes. Transportation is provided for all students enrolled in all magnet programs.

14. Why can't my child receive a direct transportation route instead of going through a transfer point?

Magnet students comprise only a small percentage of the number of students who are assigned a transportation route, therefore, a direct route may not be possible. However, if a significant number of magnet students reside in the same zone or attend a school on the same route, a direct route may be assigned by the Transportation Department.

15. Why are students required to sign a magnet contract?

Enrolling in a magnet program is a privilege, not a right. As a result, students are expected to adhere to the policies and procedures of the East Baton Rouge Parish School System and each school's program.



16. Why are there retention standards for magnet programs?

Magnet programs are accelerated and specialized programs. In order to take full advantage of the academic requirement outlined in each program, we must ensure that students are academically able to perform at a level that can ensure success.

17. My child was not promoted to the next grade level. Will this affect their magnet status?

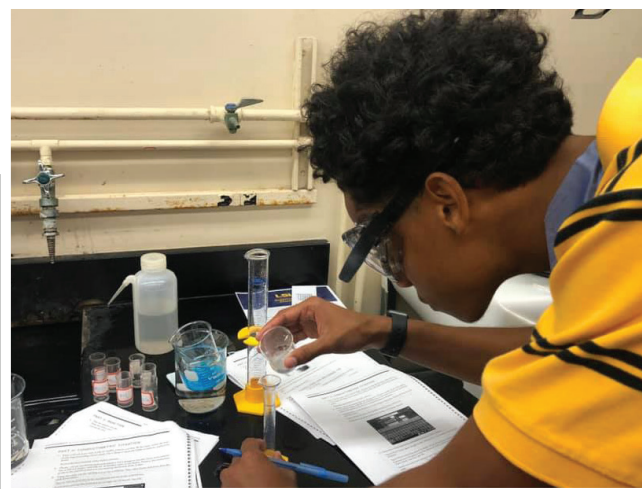
Yes, students who are not promoted must return to their home attendance zone school.

18. Do middle and high school students receive academic probation before they lose their magnet status?

Middle and high school students must receive a full semester of academic probation immediately following the semester that they are placed on probation.

19. Can a student's prior academic probation be used to revoke their magnet status?

Once a student achieves the required 2.50 grade point average, he/she will be in good academic standing. Therefore, a student's prior probation cannot be used to revoke the student's magnet status.



Program Eligibility Requirements

Middle School	Theme	Grades
Belfair	Montessori	6-8
Letters of Recommendation: Two letters of recommendations from current teachers		
Park Forest	Creative Sciences & Arts	6-8
No admission criteria		
Capitol	Digital Media	6-8
Mayfair	Academic	6-8
McKinley	Academic; Visual & Performing Arts	6-8
Scotlandville	Pre-Engineering	6-8
Sherwood	Academic	6-8
Southeast	Digital Arts & Technology	6-8
Woodlawn	Academic	6-8
Grades: A cumulative 2.50 grade point average (GPA) based on the last four (4) consecutive semesters Test scores: Perform on a level of Basic or above on LEAP 2025 or the equivalent on a norm-referenced assessment in both ELA and math		
Istrouma	Broadcast Communications; Honors Academy	6-8
Grades: A cumulative 2.50 grade point average (GPA) based on the last four (4) consecutive semesters; students must have a cumulative 3.00 grade point average (GPA) based on the last four (4) consecutive semesters for Honors Program Test scores: Perform on a level of Basic or above on LEAP 2025 or the equivalent on a norm-referenced assessment in both ELA and math		
Westdale	World Language (French or Spanish)	6-8
Grades: A cumulative 2.50 grade point average (GPA) based on the last four (4) consecutive semesters Test scores: Perform on a level of Basic or above on LEAP 2025 or the equivalent on a norm-referenced assessment in both ELA and math; must be proficient in target language or have prior immersion experience.		

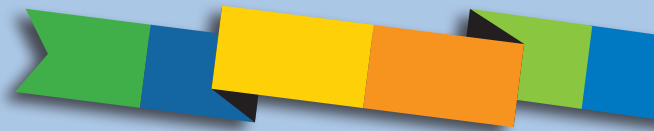
High School	Theme	Grades
Belaire	Creative Sciences & Arts	9-11
Glen Oaks	Health Sciences; Biomedical	9-10
Scotlandville	Business; Engineering; Governmental Affairs/Law	9-10
No admission criteria		
Baton Rouge	Academic	9-11
Glen Oaks	Medical	9-11
Liberty	Digital Arts Biomedical Engineering	9-11
Woodlawn	Academic	9-11
Grades: A cumulative 2.50 grade point average (GPA) based on the last four (4) consecutive semesters Test scores: Perform on a level of Basic or above on LEAP 2025 or the equivalent on a norm-referenced assessment in both ELA and math		
Istrouma	Broadcast Communications; Honors Academy	9-11
Grades: A cumulative 2.50 grade point average (GPA) based on the last four (4) consecutive semesters; students must have a cumulative 3.00 grade point average (GPA) based on the last four (4) consecutive semesters for Honors Program Test scores: Perform on a level of Basic or above on LEAP 2025 or the equivalent on a norm-referenced assessment in both ELA and math		
Scotlandville	Academic; Engineering	9-11
Grades: A cumulative 2.50 grade point average (GPA) based on the last four (4) consecutive semesters; students must have a cumulative 3.00 grade point average (GPA) based on the last four (4) consecutive semesters for the Engineering Magnet Program Test scores: Perform on a level of Basic or above on LEAP 2025 or the equivalent on a norm-referenced assessment in both ELA and math		
Tara	Cyber Technology	9-10
Applicants must enter on grade level, complete interest survey, participate in parent/guardian interview, and commit to mentoring & summer bridge programs		

Need assistance with the application process or don't have access to a computer?
Please visit your first-choice school or the Office of Magnet Programs.

1050 South Foster Dr., Baton Rouge, LA 70806
225-922-5443 Email: magnet@ebrschools.org

Magnet Showcase Week

Schedule Of Events



School	Magnet Showcase Activity Date	Magnet Showcase Activity	Start Time	End Time
Belfair Montessori	09/29/2020	Live! Q and A Session	9:00 AM	9:30 AM
	10/02/2019	Drive-thru Meet & Greet	9:00 AM	10:00 AM
Capitol Middle	Online	Pre-recorded School Forum	Online	Online
Istrouma Middle	09/30/2020	Drive-thru Meet & Greet	10:00 AM	12:00 PM
	10/01/2020	Live! Q and A Session	2:30 PM	3:30 PM
	Online	Pre-recorded School Forum	Online	Online
Mayfair Laboratory	9/30/2020 Online	Live! Q and A Session Pre-recorded School Forum	12:00 PM Online	12:30 PM Online
McKinley Middle	9/29/2020 Online	Live! Q and A Session Pre-recorded School Forum	7:00 PM Online	8:30 PM Online
Park Forest Middle	Online	Pre-recorded School Forum	Online	Online
Scotlandville Middle	10/01/2020	Drive-thru Meet & Greet	9:00 AM	9:30 AM
Sherwood Middle	Online	Pre-recorded School Forum	Online	Online
Southeast Middle	Online	Pre-recorded School Forum	Online	Online
Westdale Middle	10/01/2020 10/01/2020	Live! Q and A Session Drive-thru Meet & Greet	8:00 AM 9:00 AM	8:45 AM 11:00 AM
Woodlawn Middle	10/01/2020 Online	Drive-thru Meet & Greet Pre-recorded School Forum	8:00 AM Online	10:00 AM Online
Baton Rouge High	10/01/2020 Online	Live! Q and A Session Pre-recorded School Forum	9:00 AM Online	10:00 AM Online
Belaire High	09/30/2020 Online	Live! Q and A Session Pre-recorded School Forum	3:30 PM Online	4:00 PM Online
Glen Oaks High	09/29/2020 10/01/2020 Online	Live! Q and A Session Drive-thru Meet & Greet Pre-recorded School Forum	9:00 AM 9:00 AM Online	9:30 AM 11:00 AM Online
Istrouma High	09/29/2020 10/01/2020 Online	Live! Q and A Session Drive-thru Meet & Greet Pre-recorded School Forum	2:30 PM 10:00 AM Online	3:30 PM 12:00 PM Online
Liberty High	09/30/2020 Online	Live! Q and A Session Pre-recorded School Forum	1:00 PM Online	2:00 PM Online
Scotlandville High	09/30/2020 09/30/2020 Online	Live! Q and A Session Drive-thru Meet & Greet Pre-recorded School Forum	11:30 AM 1:00 PM Online	12:30 PM 2:00 PM Online
Tara High	09/28/2020 09/28/2020 09/29/2020 Online	Live! Q and A Session Live! Q and A Session Drive-thru Meet & Greet Pre-recorded School Forum	9:00 AM 6:00 PM 11:00 AM Online	9:30 AM 6:30 PM 12:00 PM Online
Woodlawn High	9/29/2020	Live! Q and A Session	9:00 AM	9:30 AM



Leslie Brown, Superintendent

Adam Smith, Associate Superintendent

Theresa Porter, Director of Magnet Programs

Kacye Womack, MSAP Magnet Integration Specialist

Dr. Ni'Shawn Stovall, Recruiter for Magnet Programs

Board Members

**Michael Gaudet, President
District 7**

**Tramelle Howard, Vice-President
District 3**

**Mark Bellue
District 1**

**Dadrius Lanus
District 2**

**Dawn Chanet Collins
District 4**

**Evelyn Ware-Jackson
District 5**

**Jill Dyason
District 6**

**Connie Bernard
District 8**

**David Tatman
District 9**



Office of Magnet Programs

1050 South Foster Dr.

Baton Rouge, LA 70806

Contact us at 225-922-5443 or magnet@ebschools.org